

*soffio* electro



## Soffio**Electro**

**MODERN WALL HEATING FOR  
BOTH TRADITIONAL AND MODERN  
CONSTRUCTION**

# Installation of the SoffioElectro wall heating system is simple and cheap, it does not require any specialized equipment nor authorizations.

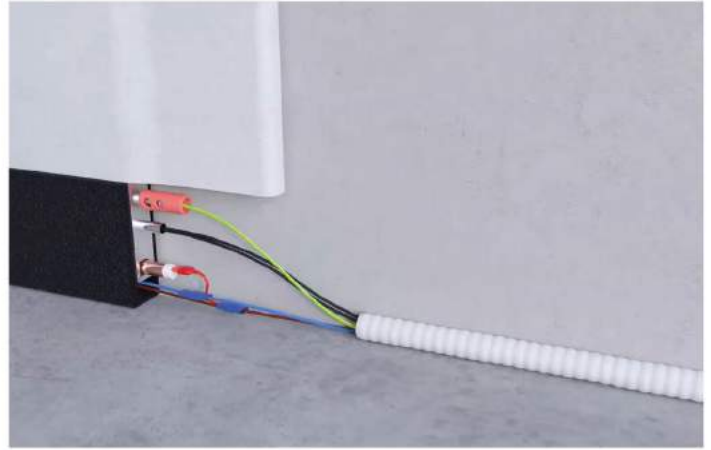
---



## Step 1

---

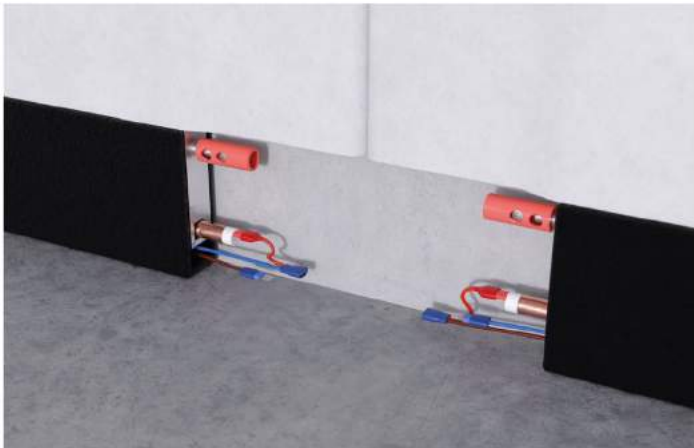
Panels are attached to the structure using screws or on a gypsum adhesive directly to walls, similarly to ordinary plasterboards.



## Step 2

---

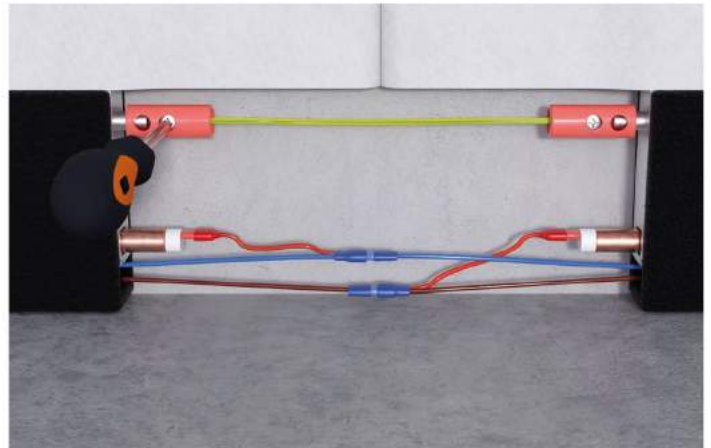
Power connections are made with a standard 1.5 square millimeter electrical cable, connecting the panels in a given room in series into a single loop not exceeding 12 units, controlled by a single thermostat.



## Step 3

---

The heating system's connections are made using the installed cables and connectors in the bottom collector.



## Step 4

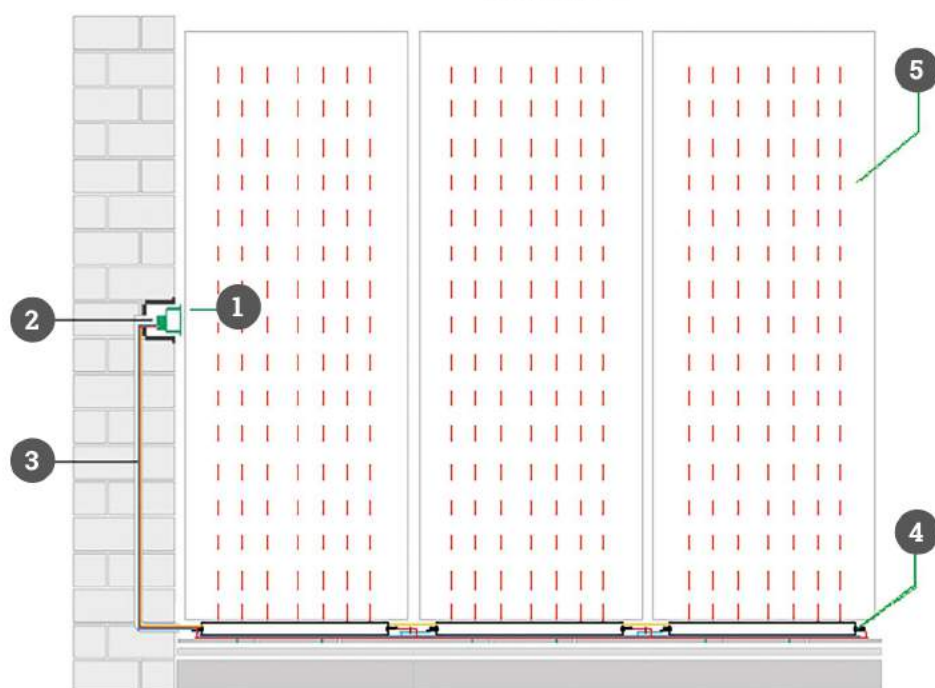
---

Adjacent panels are connected with double-sided connectors.

# Savings and comfort for your family

- ☑ SoffioElectro heating panel has the form of standard plasterboard, ready for assembly during finishing of load-bearing walls, partition walls and sloped surfaces of attics.
- ☑ Each panel consists of a collector located at the bottom of the panel, equipped with an installed electric heater that transfers heat to the substance enclosed within the radiating elements arranged in the heating plate section.
- ☑ These elements transfer the heat absorbed from the collector to the entire surface of the board using the phenomenon of phase transition.
- ☑ Heating elements of the plate are made of high quality aluminum, which ensures high thermal conductivity as well as the complete resistance of the system to corrosion. The electric heater installed in it rapidly heats the system's heating elements.

- |                        |   |
|------------------------|---|
| 1 Paper                | 1 Heat Decor thermostat                         |
| 2 Aluminum foil        | 2 Junction box                                  |
| 3 12.5 mm plasterboard | 3 Protective pipe with electrical wires         |
| 4 Lower collector      | 4 SoffioElectro temperature sensor              |
|                        | 5 GK SoffioElectro heating panel<br>100x60x12,5 |



# Advantages of SoffioElectro panels

---

## Freely manage the heating of your home

They can be hidden under a baseboard trim, allowing the installation of heating panels at any stage of finishing or renovation work.



### Comfort of use

SoffioElectro panels are a modern and comfortable source of radiant heat, allowing a reduction in room air temperature without compromising thermal comfort.



### Savings

The lower collector is powered by a heater with a power of only 100 or 150 watts (depending on the height of the room), thus enabling the room to be heated to the desired temperature more quickly and minimizing heating costs. Only a small amount of aluminum surface is heated, resulting in a reduction in energy consumption by up to 15%. The ability to lower the temperature by as little as 4 degrees reduces energy consumption by another 24%, resulting in even more savings.



### Efficiency

The heating capacity of one panel reaches up to 200 W, which is sufficient to heat an area of 3 m<sup>2</sup>. You only need only 6 modules to heat a room with an area of 20 m<sup>2</sup>.



### Reliability

The phase transition system is reliable and comes with a 30-year warranty.



### Ease of use

Thanks to the low load on the electrical system, the SoffioElectro panel system can be installed in any building.



### Positive impact on health and well-being

SoffioElectro wall heating panels operate on the principle of safe thermal radiation generated by walls. Thus, they eliminate air convection, helping to get rid of dust, mites, allergens, moisture, mold, and dry air. They also prevent walls and ceilings from getting dirty.



### There are no restrictions on the choice of floors and interior design.

# Application of SoffioElectro heating panels



**Traditional residential  
and commercial  
construction**



**Modern structures:  
timber-framed and LECA  
houses**



**Modernized and  
renovated buildings**

**Panels can be installed at every stage  
of finishing or renovation works:**



on load-bearing walls



on partition walls



on sloped surfaces of attics

**SoffioElectro heating panels can replace traditional solutions, such as:**

low-temperature systems (heating pumps, solar modules, electric furnaces, gas furnaces)

high-temperature systems – solid fuel boilers (coal, wood, ecological fuel)

All you need is a controller managing room temperature and heating elements in the plasterboard.

**Thermal parameters of the heating panel**

are divided into two models:

☑ GK-H100 – plasterboard – 204 x 60 x 12.5 mm  
with a power of 100W

☑ GK-H150 – plasterboard – 204 x 60 x 12.5 mm  
with a power of 150W

# Kontakt

---



SoffioElectro wall heating panels -  
heat straight from the wall

**ECONOMY AND COMFORT  
FOR YOUR FAMILY**

## Distribution

House Of Innovatory Technologies Sp. z o.o.  
Słowackiego 33  
43-502 Czechowice-Dziedzice  
NIP 638 183 49 45

## Sales office

phone: +48 787274300  
e-mail: kontakt@soffioelectro24.pl

## Headquarters

Juliusza Słowackiego 33  
43-502 Czechowice-Dziedzice  
Poland

